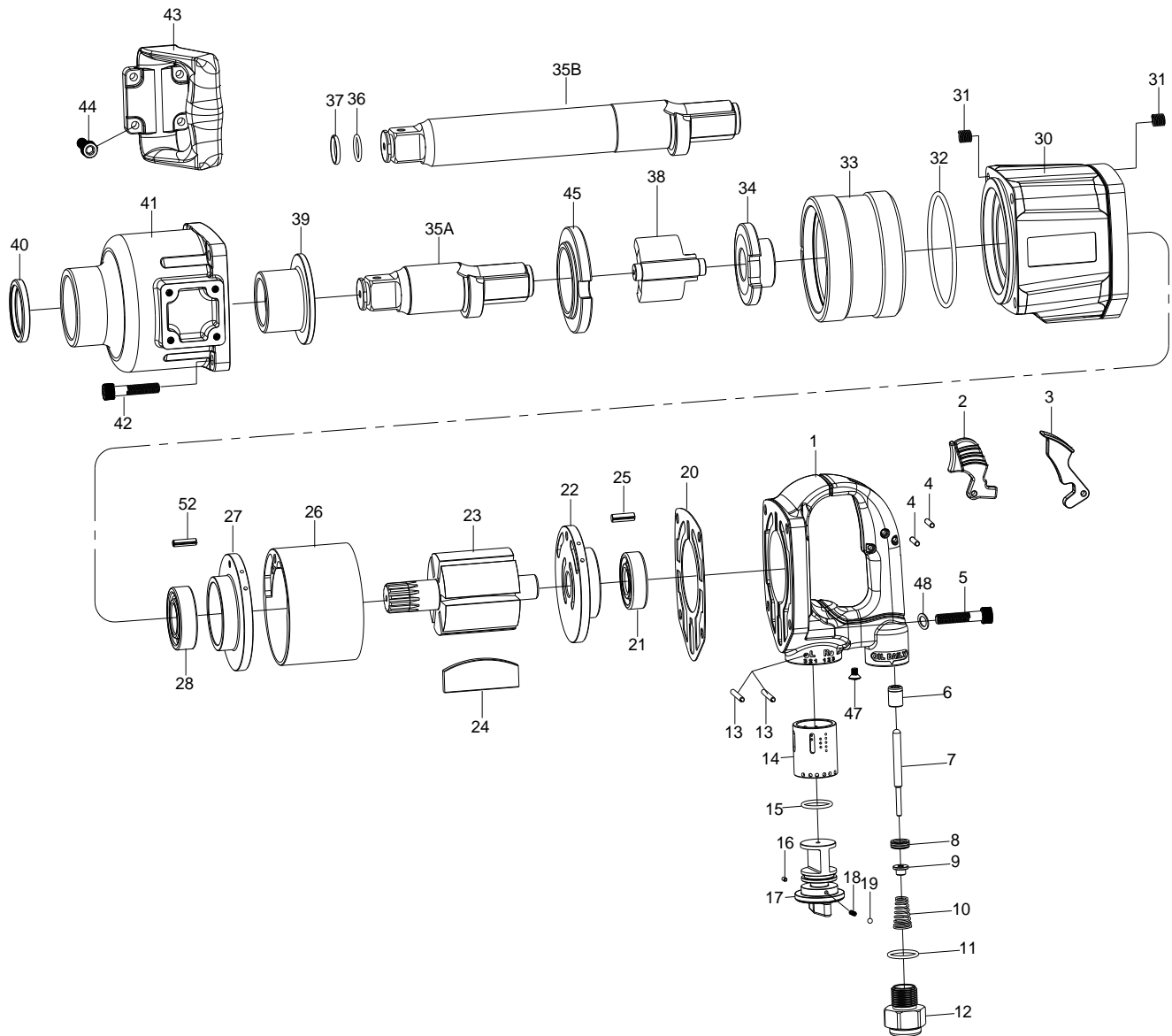


1" SQ. DR. SUPER DUTY IMPACT WRENCH



1841/1841-6

INDEX NO.	DESCRIPTION	REQ'D NO.	INDEX NO.	DESCRIPTION	REQ'D NO.
★ 1	Backhead Assembly (incl. 6.14)	1	26	Cylinder	1
2	Inside Trigger (Option)	1	27	Front End Plate	1
3	Outside Trigger (Option)	1	28	Ball Bearing	1
4	Pin	2	30	Housing	1
5	Screw	4	31	Heil-Coil	8
● 6	Bushing	1	32	O-Ring	1
7	Valve Stem	1	33	Hammer Frame	1
8	Throttle Valve Seat	1	34	Hammer Cam	2
9	Throttle Valve	1	35A	Standard Anvil (for KI-1841)	1
10	Spring	1	35B	6" Extended Anvil (for KI-1841-6)	1
11	O-Ring	1	36	O-Ring	1
12	Air Inlet	1	37	Socket Retainer	1
13	Pin	2	38	Hammer	2
● 14	Reverse Valve Bushing	1	● 39	Bushing	1
15	O-Ring	1	● 40	Oil Seal	1
16	Pin	1	★ 41	Hammer Case Assembly (incl. 39.40)	1
17	Reverse Valve	1	42	Screw	4
18	Spring	1	43	Side Spade Handle	1
19	Steel Ball	1	44	Screw	4
20	Gasket	1	45	Bushing	1
● 21	Ball Bearing	1	47	Screw	1
★ 22	Rear End Plate Assembly (incl. 21)	1	48	Washer	4
23	Rotor	1	52	Pin	1
24	Rotor Blade	6	TK	Tune-Up Kit { incl.10.11.15.18.19.20.24 (6).32.36.37 }	
25	Pin	1			

★ Must be Purchased in Assembly Set

● Recommended not to be purchased alone due to assembly difficult